

ComAvail

Intent

1. Immediately show the com port added when an appropriate USB device is connected.
2. Immediately show the port removed when a device is removed.
3. List all com ports available on your system without having to open device manager.

To start

1. Select Start→All Programs→ComAvail→ComAvail.

Presentation

A Windows system tray icon appears that looks like this.



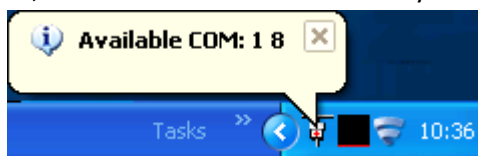
Operation

To see ports available

1. Move the mouse over the ComAvail icon in the windows system tray and wait a moment.

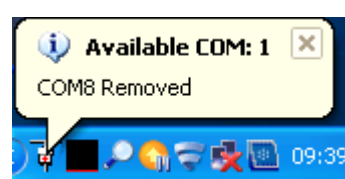
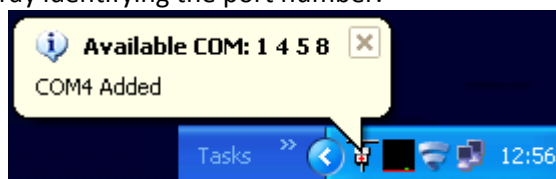


2. Or, click the ComAvail Icon in the system tray.



To see com port number of a USB device just connected or removed

Physically plug or unplug the USB device and a Balloon appears from the ComAvail icon in the system tray identifying the port number.



To close ComAvail and remove system tray icon

Right click on the ComAvail Icon and click Exit when it appears.



To View Help or check the version

Double-click the ComAvail icon in the system tray and enlarge the window that appears to suit. Use the Hide button when finished. ComAvail system tray icon application continues.

Installation

To Uninstall

Start→Control panel→Add/Remove Programs→ComAvail.

Also manually remove any manually added ComAvail shortcuts from Start→All Programs->Startup, from list of recent icons above the start button, from desktop and from elsewhere, otherwise ComAvails auto-update may get confused if you use them later and consequently may update to an older version. If so Add/remove programs can restore the version you last had.

To Re-Install

Run setup.exe from the installation .Zip file. This will install *and* start the application.

To auto start ComAvail on system start-up

Drag a shortcut to ComAvail into the Startup folder as follows

1. Go to Start→All Programs->Startup,
right click mouse on this item
select Open.
2. Go to Start→All programs→ComAvail →ComAvail,
Keeping Ctrl-key and left-mouse-button held, drag the ComAvail icon into the Startup folder.

Home

<http://www.seabrooks.plus.com/comavail>

Exe Folder example

C:\Documents and Settings\<username>\Local Settings\Apps\2.0\K1ZA1ZJH.7GH\7GDTLC3J.VPR\coma..tion_e55033019b62197a_0001.0000_1d3868c4f6a59611\ComAvail.exe

Limitations

This document refers only to use on a Windows XP (32bit) system.

There are a limited number of com ports that ComAvail can count to. ComAvail version 1.0.0.0 can handle up to Com20, version 1.0.0.1 to com30, version 1.0.0.2 to com40.

64 characters is the maximum length of the ComAvail tooltip text that is displayed when the mouse is moved over the icon, so it is possible that not all available ports can be listed here. However all the available ports can be seen by clicking the ComAvail icon, even if 40 ports are available.

Adding or removing more than one device at exactly the same time will not always show correctly.

The application can use up to 6% of CPU time and up to 72Mb of RAM when it accesses PDF help online and checks for updates.

If an error occurs that ComAvail cannot handle it may choose to play safe and terminate.

English language only.

Disclaimer

This software is a goodwill gesture, it is not suitable for any specific or explicit purpose or system and as such the author or affiliates or associates or providers can take no responsibility for losses apparent due to its attempted use.